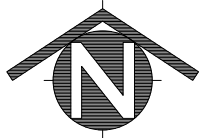
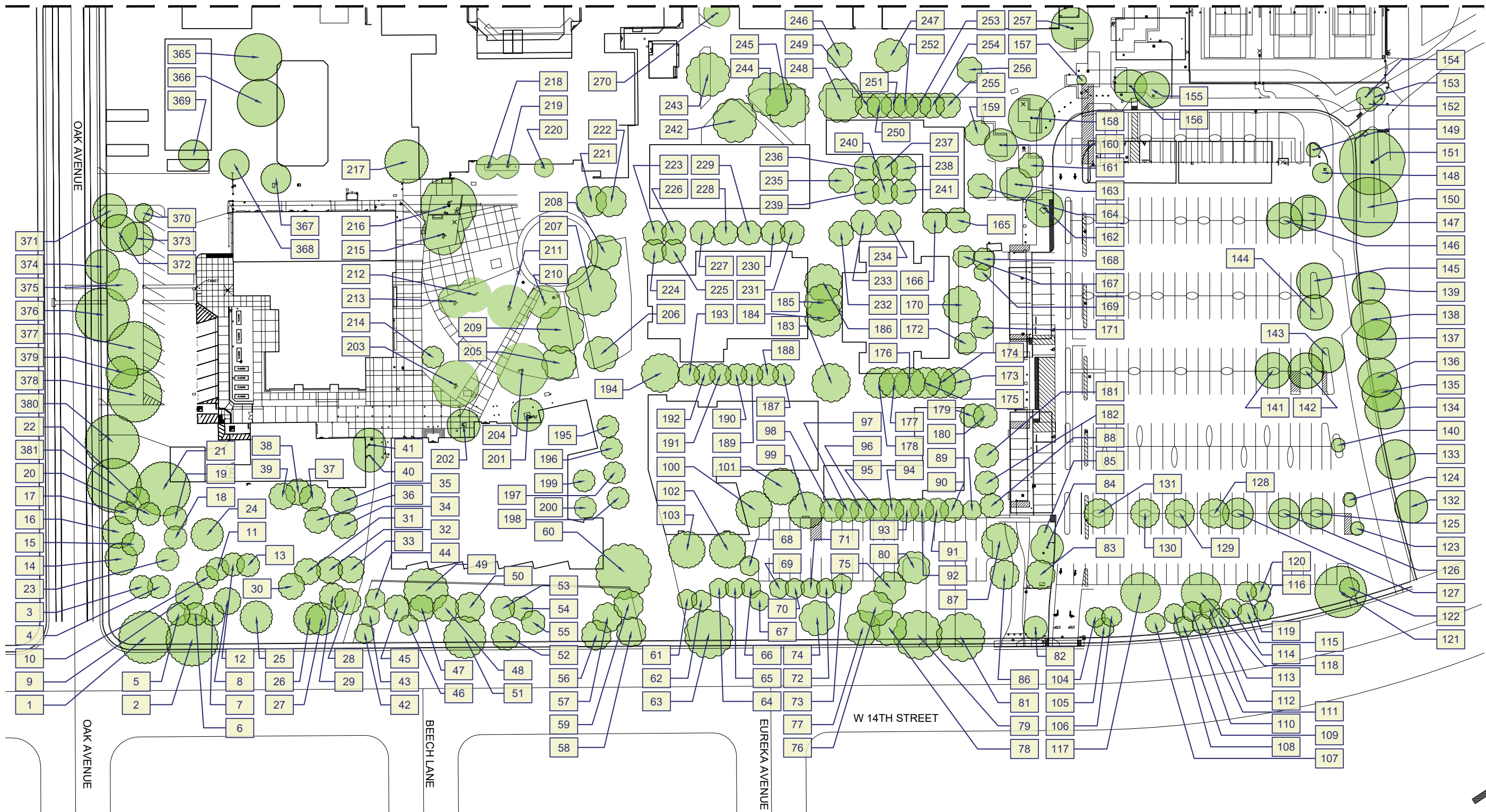
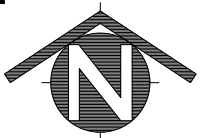
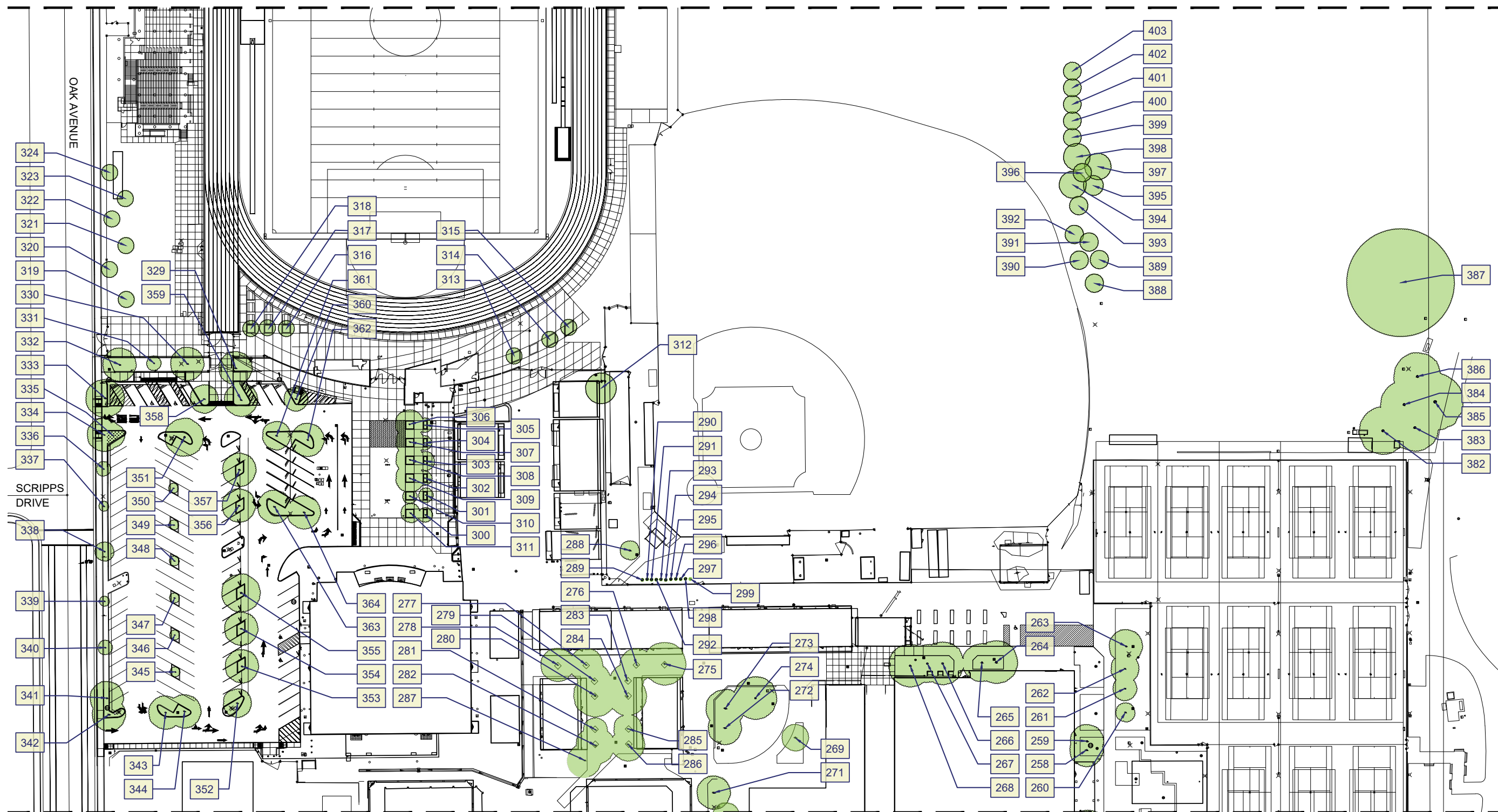
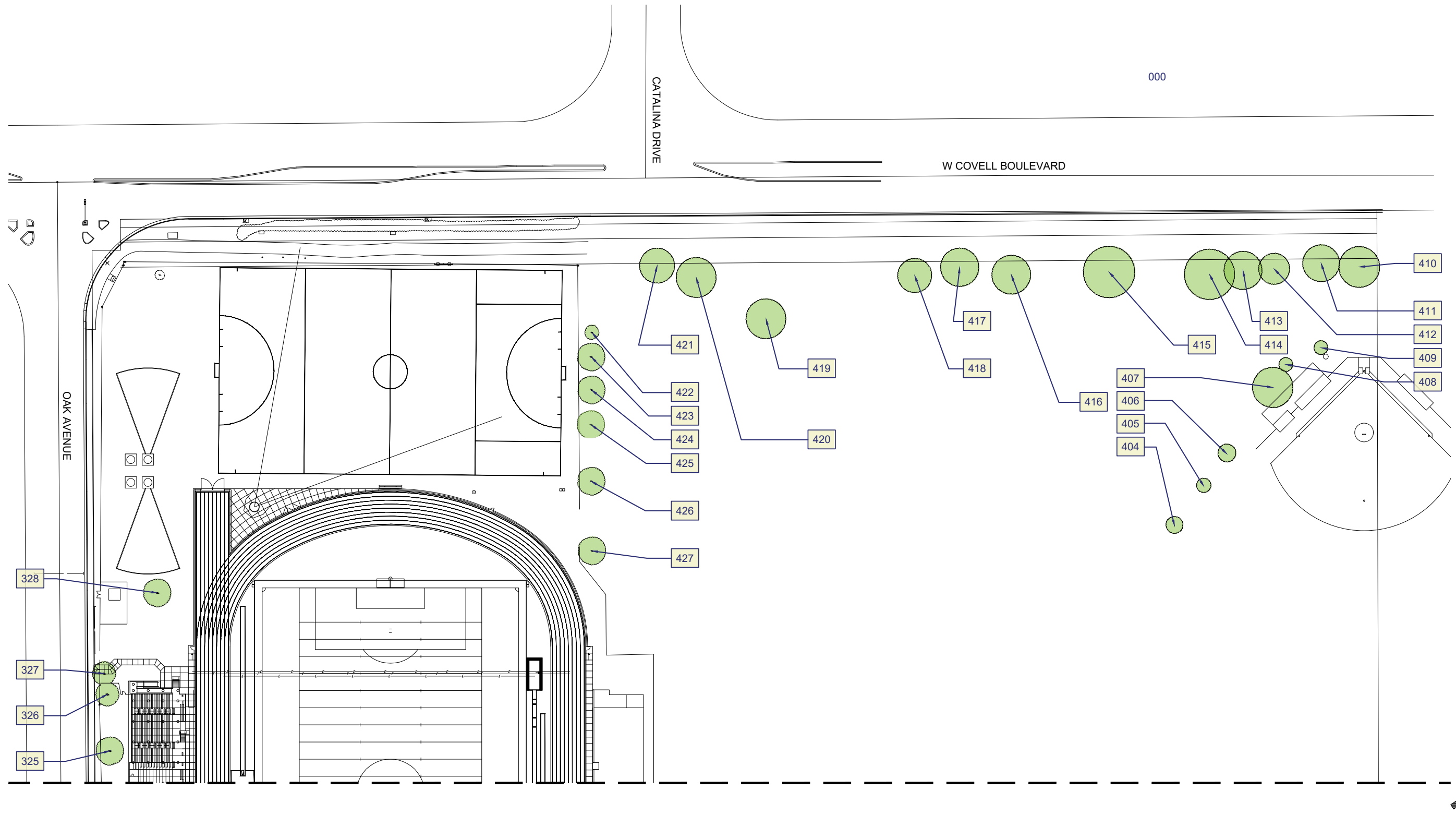


Davis Senior High School
315 W 14th St #1914, Davis, CA 95616







Tree Data

ID	Tree species - Common Name	Botanical Name	Deciduous/ Evergreen	Approx. Height Range (ft)	Approx. Canopy Width (ft)	Trunk Size DBH (in)	Observable Health Condition	Notes
DHS-1	Honey Locust	Gleditsia triacanthos	Deciduous	37	42	22	Some dead branches	
DHS-2	Elm	Ulmus	Deciduous	55	51	25	Dead branches, surface roots	
DHS-3	Modesto Ash	Fraxinus velutina 'Modesto'	Deciduous	35	22	11	Mostly dead	
DHS-4	Redwood	Sequoia sempervirens	Evergreen	40	17	10	Half dead	
DHS-5	Redwood	Sequoia sempervirens	Evergreen	68	26	23	Signs of lack of water	
DHS-6	Redwood	Sequoia sempervirens	Evergreen	62	18	14	Signs of lack of water	
DHS-7	Redwood	Sequoia sempervirens	Evergreen	73	31	25	Signs of lack of water	
DHS-8	Redwood	Sequoia sempervirens	Evergreen	62	35	21	Canopy thin, signs of lack of water	
DHS-9	Redwood	Sequoia sempervirens	Evergreen	66	29	15	Signs of lack of water	
DHS-10	Redwood	Sequoia sempervirens	Evergreen	81	38	27	Signs of lack of water	
DHS-11	Redwood	Sequoia sempervirens	Evergreen	55	0	13	Dead	
DHS-12	Redwood	Sequoia sempervirens	Evergreen	51	29	13	Signs of lack of water	
DHS-13	Redwood	Sequoia sempervirens	Evergreen	62	46	31	Signs of lack of water	
DHS-14	Redwood	Sequoia sempervirens	Evergreen	73	42	33	Signs of lack of water	
DHS-15	Redwood	Sequoia sempervirens	Evergreen	73	34	23	Signs of lack of water	
DHS-16	Redwood	Sequoia sempervirens	Evergreen	53	21	16	Signs of lack of water	
DHS-17	Redwood	Sequoia sempervirens	Evergreen	37	17	9	Signs of lack of water	
DHS-18	Redwood	Sequoia sempervirens	Evergreen	53	34	27	Signs of lack of water	
DHS-19	Redwood	Sequoia sempervirens	Evergreen	73	38	25	Signs of lack of water	
DHS-20	Redwood	Sequoia sempervirens	Evergreen	59	22	19	No observable problems	
DHS-21	Honey Locust	Gleditsia triacanthos	Deciduous	55	39	22	Dead branches	
DHS-22	Sawleaf Zelkova	Zelkova serrata	Deciduous	46	50	16	crowded by Redwood's	
DHS-23	Honey Locust	Gleditsia triacanthos	Deciduous	59	29	18	Signs of lack of water	
DHS-24	London Plane	Platanus x acerifolia	Deciduous	33	25	9	Some dead branches	
DHS-25	London Plane	Platanus x acerifolia	Deciduous	37	25	9	Some dead branches	
DHS-26	Redwood	Sequoia sempervirens	Evergreen	40	22	15	Signs of lack of water	
DHS-27	Redwood	Sequoia sempervirens	Evergreen	57	29	21	Surface roots signs of lack of water	
DHS-28	Redwood	Sequoia sempervirens	Evergreen	64	50	29	Lifting adjacent concrete, signs of lack of water, surface roots	
DHS-29	Redwood	Sequoia sempervirens	Evergreen	48	38	13	Signs of lack of water	
DHS-30	Redwood	Sequoia sempervirens	Evergreen	59	25	12	Signs of lack of water	
DHS-31	Redwood	Sequoia sempervirens	Evergreen	77	38	27	Signs of lack of water	
DHS-32	Redwood	Sequoia sempervirens	Evergreen	64	21	19	Signs of lack of water	
DHS-33	Redwood	Sequoia sempervirens	Evergreen	62	25	19	Signs of lack of water	
DHS-34	Redwood	Sequoia sempervirens	Evergreen	46	25	16	Signs of lack of water	
DHS-35	Redwood	Sequoia sempervirens	Evergreen	62	29	18	Signs of lack of water	

Data Collection - Davis Senior High School - Tree Data

DHS-36	Redwood	Sequoia sempervirens	Evergreen	37	18	11	Signs of lack of water	
DHS-37	Redwood	Sequoia sempervirens	Evergreen	59	26	16	Signs of lack of water	
DHS-38	Redwood	Sequoia sempervirens	Evergreen	62	26	17	Signs of lack of water	
DHS-39	Redwood	Sequoia sempervirens	Evergreen	62	26	16	Signs of lack of water	
DHS-40	Ornamental Pear	Pyrus calleryana	Deciduous	46	40	15	No observable problems	Too close to building
DHS-41	Ornamental Pear	Pyrus calleryana	Deciduous	33	26	9	No observable problems	Too close to building
DHS-42	Redwood	Sequoia sempervirens	Evergreen	62	34	24	Surface roots	Too close a fire hydrant
DHS-43	Redwood	Sequoia sempervirens	Evergreen	44	21	11	Surface roots	
DHS-44	Redwood	Sequoia sempervirens	Evergreen	22	13	5	No observable problems	
DHS-45	Redwood	Sequoia sempervirens	Evergreen	70	22	25	Surface roots	
DHS-46	Redwood	Sequoia sempervirens	Evergreen	62	17	19	Thin	
DHS-47	Redwood	Sequoia sempervirens	Evergreen	90	34	29	Surface roots	
DHS-48	Redwood	Sequoia sempervirens	Evergreen	64	29	20	No observable problems	
DHS-49	Cork Oak	Quercus suber	Evergreen	59	56	31	No observable problems	Close to building - Probably damaged due to new construction of building
DHS-50	Modesto Ash	Fraxinus velutina 'Modesto'	Deciduous	64	50	24	Large round trunk, surface roots	
DHS-51	Cork Oak	Quercus suber	Evergreen	46	28	18	Low canopy due to adjacent tree	
DHS-52	Elm	Ulmus	Deciduous	42	25	13	Half dead	
DHS-53	Redwood	Sequoia sempervirens	Evergreen	75	34	17	No observable problems	
DHS-54	Redwood	Sequoia sempervirens	Evergreen	75	28	31	dual leader 20 feet up	
DHS-55	Redwood	Sequoia sempervirens	Evergreen	64	28	27	Signs of lack of water	
DHS-56	Ornamental Pear	Pyrus calleryana	Deciduous	35	28	9	Some dead branches	
DHS-57	Ornamental Pear	Pyrus calleryana	Deciduous	33	28	11	some dead branches	
DHS-58	London Plane	Platanus x acerifolia	Deciduous	40	34	14	Dead branches	
DHS-59	Ornamental Pear	Pyrus calleryana	Deciduous	22	13	8	Mistletoe	
DHS-60	Cork oak	Quercus suber	Evergreen	59	55	42	No observable problems	
DHS-61	Ornamental Pear	Pyrus calleryana	Deciduous	35	25	11	Sucker growth at roots	
DHS-62	Ornamental Pear	Pyrus calleryana	Deciduous	35	17	9	Half dead	
DHS-63	Cork oak	Quercus suber	Evergreen	44	55	25	No observable problems	
DHS-64	Redwood	Sequoia sempervirens	Evergreen	70	39	27	No observable problems	
DHS-65	Redwood	Sequoia sempervirens	Evergreen	51	27	15	No observable problems	
DHS-66	Redwood	Sequoia sempervirens	Evergreen	73	45	37	No observable problems	
DHS-67	Sawleaf Zelkova	Zelkova serrata	Deciduous	59	55	17	Dead branches	
DHS-68	London Plane	Platanus x acerifolia	Deciduous	31	25	6	Half dead surface roots	
DHS-69	Redwood	Sequoia sempervirens	Evergreen	62	21	23	No observable problems	
DHS-70	Redwood	Sequoia sempervirens	Evergreen	44	21	8	No observable problems	
DHS-71	Redwood	Sequoia sempervirens	Evergreen	70	22	19	No observable problems	
DHS-72	Redwood	Sequoia sempervirens	Evergreen	53	13	13	No observable problems	
DHS-73	Redwood	Sequoia sempervirens	Evergreen	57	38	24	No observable problems	
DHS-74	Cork Oak	Quercus suber	Evergreen	37	34	22	Surface roots	
DHS-75	Ornamental Pear	Pyrus calleryana	Deciduous	42	46	25	Surface roots	

DHS-76	Cork Oak	Quercus suber	Evergreen	62	50	35	Surface roots, low crotch on trunk	
DHS-77	Redwood	Sequoia sempervirens	Evergreen	75	25	23	No observable problems	
DHS-78	Redwood	Sequoia sempervirens	Evergreen	70	34	27	No observable problems	
DHS-79	Honey Locust	Gleditsia triacanthos	Deciduous	40	38	14	Dead branches	
DHS-80	London Plane	Platanus x acerifolia	Deciduous	42	32	11	Dead branches	
DHS-81	Cork Oak	Quercus suber	Evergreen	62	63	40	Canopy is thin	
DHS-82	Chinese Hackberry	Celtis sinensis	Deciduous	15	22	5	No observable problems	
DHS-83	Ornamental Pear	Pyrus calleryana	Deciduous	32	40	20	Large wound on trunk	
DHS-84	Maple	Acer	Deciduous	21	22	8	Half dead	
DHS-85	Citrus	Citrus	Evergreen	10	22	4	No observable problems	
DHS-86	Chinese Hackberry	Celtis sinensis	Deciduous	21	22	6	No observable problems	
DHS-87	Chinese Hackberry	Celtis sinensis	Deciduous	29	31	13	No observable problems	
DHS-88	Sweet Bay	Laurus nobilis	Evergreen	17	18	6	Significant damage to south side of trunk	
DHS-89	Sweet Bay	Laurus nobilis	Evergreen	17	22	5	Significant damage to south side of trunk	
DHS-90	Crape Myrtle	Lagerstroemia indica	Deciduous	17	18	2	No observable problems	Multi-trunk
DHS-91	Crape Myrtle	Lagerstroemia indica	Deciduous	15	9	2	No observable problems	Multi-trunk
DHS-92	Ornamental Pear	Pyrus calleryana	Deciduous	25	31	10	Dead branches	
DHS-93	Ornamental Pear	Pyrus calleryana	Deciduous	25	26	10	Dead branches	
DHS-94	Crape Myrtle	Lagerstroemia indica	Deciduous	19	26	2	No observable problems	Multi-trunk
DHS-95	Crape Myrtle	Lagerstroemia indica	Deciduous	13	13	2	No observable problems	Multi-trunk
DHS-96	Ornamental Pear	Pyrus calleryana	Deciduous	34	31	12	Dead branches	
DHS-97	Ornamental Pear	Pyrus calleryana	Deciduous	27	26	10	Dead branches	
DHS-98	Crape Myrtle	Lagerstroemia indica	Deciduous	13	13	1	No observable problems	Multi-trunk
DHS-99	London Plane	Platanus x acerifolia	Deciduous	42	57	16	Dead branches, surface roots	
DHS-100	London Plane	Platanus x acerifolia	Deciduous	42	57	18	Dead branches, surface roots	
DHS-101	Deador Cedar	Cedrus deodora	Evergreen	38	34	27	No observable problems	
DHS-102	London Plane	Platanus x acerifolia	Deciduous	34	40	12	Dead branches, surface roots	
DHS-103	London Plane	Platanus x acerifolia	Deciduous	27	29	11	Dead branches	
DHS-104	Redwood	Sequoia sempervirens	Evergreen	42	22	15	Top is dead	
DHS-105	Redwood	Sequoia sempervirens	Evergreen	36	26	23	No observable problems	
DHS-106	Redwood	Sequoia sempervirens	Evergreen	36	26	23	No observable problems	
DHS-107	Redwood	Sequoia sempervirens	Evergreen	55	29	22	No observable problems	
DHS-108	Redwood	Sequoia sempervirens	Evergreen	55	31	22	No observable problems	
DHS-109	Elm	Ulmus	Deciduous	44	26	19	Crowded by redwood trees, mistletoe, dead branches	
DHS-110	Redwood	Sequoia sempervirens	Evergreen	55	22	16	No observable problems	
DHS-111	Redwood	Sequoia sempervirens	Evergreen	55	31	25	No observable problems	
DHS-112	Redwood	Sequoia sempervirens	Evergreen	55	22	15	No observable problems	
DHS-113	Redwood	Sequoia sempervirens	Evergreen	55	34	21	dead branches	
DHS-114	Redwood	Sequoia sempervirens	Evergreen	55	21	18	No observable problems	
DHS-115	Redwood	Sequoia sempervirens	Evergreen	55	38	27	No observable problems	

Data Collection - Davis Senior High School - Tree Data

DHS-116	Redwood	Sequoia sempervirens	Evergreen	50	29	24	No observable problems	
DHS-117	Chinese Elm	Ulmus parvifolia	Deciduous	63	67	17	No observable problems	
DHS-118	Chinese Elm	Ulmus parvifolia	Deciduous	42	66	12	Dead branches, damage at base of tree	
DHS-119	Redwood	Sequoia sempervirens	Evergreen	69	39	35	No observable problems	
DHS-120	Redwood	Sequoia sempervirens	Evergreen	44	25	15	Sucker growth at base	
DHS-121	Chinese Tallow	Sapium sebiferum	Deciduous	46	57	22	No observable problems	
DHS-122	Crape Myrtle	Lagerstroemia indica	Deciduous	19	20	5	Too close to Chinese Tallow	Recommend for removal
DHS-123	Chinese Elm	Ulmus parvifolia	Deciduous	17	31	7	Sucker growth on branches	
DHS-124	Ornamental Pear	Pyrus calleryana	Deciduous	21	31	11	Dead branches	
DHS-125	Honey Locust	Gleditsia triacanthos	Deciduous	38	40	13	Mistletoe	
DHS-126	Ornamental Pear	Pyrus calleryana	Deciduous	25	40	13	Dead branches	
DHS-127	Chinese Hackberry	Celtis sinensis	Deciduous	29	48	13	Dead branches	
DHS-128	Purple Robe Locust	Robinia 'Purple Robe'	Deciduous	32	22	8	Dead branches	
DHS-129	Chinese Hackberry	Celtis sinensis	Deciduous	36	40	18	Dead branches, lifting curb	
DHS-130	Chinese Hackberry	Celtis sinensis	Deciduous	27	31	12	Dead branches sucker growth at base	
DHS-131	Honey Locust	Gleditsia triacanthos	Deciduous	32	33	11	Dead branches sucker growth on branches	
DHS-132	Chinese Pistache	Pistacia chinensis	Deciduous	48	75	22	Thin canopy, stressed	
DHS-133	Chinese Pistache	Pistacia chinensis	Deciduous	46	62	14	No observable problems	
DHS-134	Beefwood	Casuarina cunninghamiana	Evergreen	69	62	25	No observable problems	
DHS-135	Beefwood	Casuarina cunninghamiana	Evergreen	76	66	34	No observable problems	
DHS-136	Beefwood	Casuarina cunninghamiana	Evergreen	59	17	12	Mostly dead	Recommend for removal
DHS-137	Beefwood	Casuarina cunninghamiana	Evergreen	76	70	37	No observable problems	
DHS-138	Elm	Ulmus	Deciduous	55	57	28	Large dead limbs in canopy need to be removed	
DHS-139	Chinese Pistache	Pistacia chinensis	Deciduous	23	38	15	Significant damage to several limbs	
DHS-140	Honey Locust	Gleditsia triacanthos	Deciduous	29	35	9	No observable problems	
DHS-141	Chinese Elm	Ulmus parvifolia	Deciduous	44	53	11	sucker growth on limbs, showing signs of stress	
DHS-142	Chinese Hackberry	Celtis sinensis	Deciduous	36	44	11	No observable problems	
DHS-143	Chinese Hackberry	Celtis sinensis	Deciduous	23	31	8	Significant damage to trunk	Recommend for removal
DHS-144	Chinese Hackberry	Celtis sinensis	Deciduous	23	35	9	No observable problems	
DHS-145	Chinese Hackberry	Celtis sinensis	Deciduous	23	40	11	No observable problems	
DHS-146	Chinese Hackberry	Celtis sinensis	Deciduous	32	40	12	Dead branches	
DHS-147	Chinese Elm	Ulmus parvifolia	Deciduous	42	57	13	Sucker growth at base	
DHS-148	Pyramidal European Hornbeam	Carpinus betulus 'Fastigiata'	Deciduous	19	8	3	Half dead, damage at the base of trunk	
DHS-149	Pyramidal European Hornbeam	Carpinus betulus 'Fastigiata'	Deciduous	19	13	6	No observable problems	Valley oak volunteer growing at base
DHS-150	Chinese Pistache	Pistacia chinensis	Deciduous	38	62	21	Dead branches	
DHS-151	Elm	Ulmus	Deciduous	44	66	28	Mistletoe, dead branches	
DHS-152	Crape Myrtle	Lagerstroemia indica	Deciduous	13	15	4	No observable problems	
DHS-153	Crape Myrtle	Lagerstroemia indica	Deciduous	15	15	4	No observable problems	
DHS-154	Crape Myrtle	Lagerstroemia indica	Deciduous	15	11	3	No observable problems	
DHS-155	Chinese Pistache	Pistacia chinensis	Deciduous	23	31	7	No observable problems	

DHS-156	Chinese Pistache	<i>Pistacia chinensis</i>	Deciduous	23	31	9	Close to solar panel transformers	
DHS-157	Trident Maple	<i>Acer buergerianum</i>	Deciduous	13	13	3	No observable problems	
DHS-158	London Plane	<i>Platanus x acerifolia</i>	Deciduous	36	44	18	No observable problems	
DHS-159	Ornamental Pear	<i>Pyrus calleryana</i>	Deciduous	27	26	6	Dead limbs	
DHS-160	Ornamental Pear	<i>Pyrus calleryana</i>	Deciduous	29	22	10	No observable problems	
DHS-161	Chinese Pistache	<i>Pistacia chinensis</i>	Deciduous	19	18	4	No observable problems	
DHS-162	London Plane	<i>Platanus x acerifolia</i>	Deciduous	29	40	13	Dead branches	
DHS-163	Ornamental Pear	<i>Pyrus calleryana</i>	Deciduous	27	28	7	No observable problems	
DHS-164	Chinese Pistache	<i>Pistacia chinensis</i>	Deciduous	27	40	10	No observable problems	
DHS-165	Ornamental Pear	<i>Pyrus calleryana</i>	Deciduous	29	34	13	Lifting concrete	
DHS-166	Ornamental Pear	<i>Pyrus calleryana</i>	Deciduous	29	25	11	Lifting tree grate	
DHS-167	Sweet Bay	<i>Laurus nobilis</i>	Evergreen	21	22	8	Significant trunk damage on west side	
DHS-168	Sweet Bay	<i>Laurus nobilis</i>	Evergreen	25	26	9	Significant trunk damage on west side	
DHS-169	Sweet Bay	<i>Laurus nobilis</i>	Evergreen	15	13	4	Significant trunk damage on west side	
DHS-170	Valley Oak	<i>Quercus lobata</i>	Deciduous	27	40	11	No observable problems	
DHS-171	Sweet Bay	<i>Laurus nobilis</i>	Evergreen	19	35	9	Crossing branches	Too close the light pole
DHS-172	Sweet Bay	<i>Laurus nobilis</i>	Evergreen	21	26	9	Significant trunk damage on west side	
DHS-173	Ornamental Pear	<i>Pyrus calleryana</i>	Deciduous	25	40	13	lifting concrete	
DHS-174	Ornamental Pear	<i>Pyrus calleryana</i>	Deciduous	25	31	9	Lifting concrete	
DHS-175	Ornamental Pear	<i>Pyrus calleryana</i>	Deciduous	25	35	13	Lifting concrete	
DHS-176	Ornamental Pear	<i>Pyrus calleryana</i>	Deciduous	21	35	9	Lifting concrete and tree grate	
DHS-177	Ornamental Pear	<i>Pyrus calleryana</i>	Deciduous	25	31	11	Lifting concrete	
DHS-178	Ornamental Pear	<i>Pyrus calleryana</i>	Deciduous	32	31	16	Lifting concrete	
DHS-179	Sweet Bay	<i>Laurus nobilis</i>	Evergreen	15	15	5	No observable problems	
DHS-180	Sweet Bay	<i>Laurus nobilis</i>	Evergreen	15	18	7	Significant trunk damage on west side	
DHS-181	Sweet Bay	<i>Laurus nobilis</i>	Evergreen	19	26	8	Significant trunk damage on west side	
DHS-182	Sweet Bay	<i>Laurus nobilis</i>	Evergreen	19	11	6	Significant trunk damage on west side	
DHS-183	London Plane	<i>Platanus x acerifolia</i>	Deciduous	29	34	13	Dead branches	
DHS-184	London Plane	<i>Platanus x acerifolia</i>	Deciduous	27	39	10	Dead branches	
DHS-185	London Plane	<i>Platanus x acerifolia</i>	Deciduous	21	28	6	Dead branches	
DHS-186	Ornamental Pear	<i>Pyrus calleryana</i>	Deciduous	27	39	4	Lifting concrete	
DHS-187	Ornamental Pear	<i>Pyrus calleryana</i>	Deciduous	25	28	9	Dead branches	
DHS-188	Ornamental Pear	<i>Pyrus calleryana</i>	Deciduous	25	28	10	Dead branches	
DHS-189	Ornamental Pear	<i>Pyrus calleryana</i>	Deciduous	25	28	12	Dead branches	
DHS-190	Ornamental Pear	<i>Pyrus calleryana</i>	Deciduous	23	28	7	Dead branches	
DHS-191	Ornamental Pear	<i>Pyrus calleryana</i>	Deciduous	21	28	7	Dead branches	
DHS-192	Ornamental Pear	<i>Pyrus calleryana</i>	Deciduous	25	28	10	Dead branches	
DHS-193	Ornamental Pear	<i>Pyrus calleryana</i>	Deciduous	25	28	11	Dead branches	
DHS-194	Chinese Elm	<i>Ulmus parvifolia</i>	Deciduous	38	42	15	No observable problems	
DHS-195	Ornamental Pear	<i>Pyrus calleryana</i>	Deciduous	32	31	14	Dead branches	
DHS-196	Ornamental Pear	<i>Pyrus calleryana</i>	Deciduous	32	22	12	Dead branches	

Data Collection - Davis Senior High School - Tree Data

DHS-197	Ornamental Pear	Pyrus calleryana	Deciduous	29	17	10	Dead branches	
DHS-198	Ornamental Pear	Pyrus calleryana	Deciduous	23	17	7	Dead branches	
DHS-199	Sweet Bay	Laurus nobilis	Evergreen	19	14	2	Dead branches	Multi-trunk
DHS-200	Japanese maple	Acer palmatum	Deciduous	16	28	7	No observable problems	Multi-trunk
DHS-201	Japanese Maple	Acer palmatum	Deciduous	15	6	3	Dead	Multi-trunk
DHS-202	Maidenhair Tree	Ginkgo biloba	Deciduous	36	20	8	Dead branch, swollen base	
DHS-203	Ornamental Pear	Pyrus calleryana	Deciduous	40	34	20	Broken branches, surface roots	
DHS-204	Sawleaf Zelkova	Zelkova serrata	Deciduous	46	59	19	Broken branches, dead branches	
DHS-205	Ornamental Pear	Pyrus calleryana	Deciduous	36	34	12	Dead branches	
DHS-206	Chinese Tallow	Sapium sebiferum	Deciduous	36	28	12	Surface roots	
DHS-207	Chinese Pistache	Pistacia chinensis	Deciduous	38	39	11	No observable problems	
DHS-208	Chinese Pistache	Pistacia chinensis	Deciduous	38	45	15	No observable problems	
DHS-209	Sawleaf Zelkova	Zelkova serrata	Deciduous	44	48	17	Dead and broken branches, too close to concrete	
DHS-210	Ornamental Pear	Pyrus calleryana	Deciduous	23	20	8	Sucker growth from roots, broken and dead branches	
DHS-211	Ornamental Pear	Pyrus calleryana	Deciduous	34	28	12	Sucker growth from roots, broken branches	
DHS-212	Ornamental Pear	Pyrus calleryana	Deciduous	32	22	11	Sucker growth at roots, dead branches	
DHS-213	Ornamental Pear	Pyrus calleryana	Deciduous	32	25	11	Broken branches, sucker growth at roots	
DHS-214	Sawleaf Zelkova	Zelkova serrata	Deciduous	7	8	1	Remove stake	Memorial
DHS-215	Chinese Pistache	Pistacia chinensis	Deciduous	44	50	16	Surface roots	
DHS-216	Ornamental Pear	Pyrus calleryana	Deciduous	38	34	22	Dead and broken branches	
DHS-217	Cork Oak	Quercus suber	Evergreen	50	56	27	No observable problems	Too close to building
DHS-218	Ornamental Pear	Pyrus calleryana	Deciduous	27	14	9	Broken branches	Too close to building
DHS-219	Ornamental Pear	Pyrus calleryana	Deciduous	27	14	8	Broken branches	Too close to building
DHS-220	Ornamental Pear	Pyrus calleryana	Deciduous	27	14	7	No observable problems	Too close to building
DHS-221	Ornamental Pear	Pyrus calleryana	Deciduous	36	39	17	No observable problems	
DHS-222	Ornamental Pear	Pyrus calleryana	Deciduous	36	39	18	No observable problems	
DHS-223	Ornamental Pear	Pyrus calleryana	Deciduous	32	25	11	Lifting concrete	
DHS-224	Ornamental Pear	Pyrus calleryana	Deciduous	32	25	9	Lifting concrete	
DHS-225	Ornamental Pear	Pyrus calleryana	Deciduous	32	25	9	Mostly dead	
DHS-226	Ornamental Pear	Pyrus calleryana	Deciduous	32	25	10	Lifting concrete	
DHS-227	Ornamental Pear	Pyrus calleryana	Deciduous	32	25	12	Lifting concrete	
DHS-228	Ornamental Pear	Pyrus calleryana	Deciduous	32	25	11	Lifting concrete	
DHS-229	Ornamental Pear	Pyrus calleryana	Deciduous	32	25	10	No observable problems	
DHS-230	Ornamental Pear	Pyrus calleryana	Deciduous	32	25	12	No observable problems	
DHS-231	Ornamental Pear	Pyrus calleryana	Deciduous	32	25	11	No observable problems	
DHS-232	Elm	Ulmus	Deciduous	32	25	17	Trunk decay, lots of topping to limbs	
DHS-233	Ornamental Pear	Pyrus calleryana	Deciduous	27	22	11	No observable problems	
DHS-234	Ornamental Pear	Pyrus calleryana	Deciduous	27	22	10	No observable problems	
DHS-235	African sumac	Rhus lancea	Evergreen	23	31	20	Severe sucker growth, encompassing entire planter	
DHS-236	Ornamental Pear	Pyrus calleryana	Deciduous	25	22	11	No observable problems	

DHS-237	Ornamental Pear	<i>Pyrus calleryana</i>	Deciduous	25	22	8	No observable problems	
DHS-238	Ornamental Pear	<i>Pyrus calleryana</i>	Deciduous	15	17	7	Significant damage to trunk on west side	
DHS-239	Ornamental Pear	<i>Pyrus calleryana</i>	Deciduous	19	22	7	No observable problems	
DHS-240	Ornamental Pear	<i>Pyrus calleryana</i>	Deciduous	21	20	10	No observable problems	
DHS-241	Ornamental Pear	<i>Pyrus calleryana</i>	Deciduous	19	20	8	No observable problems	
DHS-242	Honey Locust	<i>Gleditsia triacanthos</i>	Deciduous	57	50	22	Rot at base of tree	
DHS-243	Eastern Redbud	<i>Cercis occidentalis</i>	Deciduous	6	2	1	No observable problems	
DHS-244	Redwood	<i>Sequoia sempervirens</i>	Evergreen	64	42	27	No observable problems	
DHS-245	Redwood	<i>Sequoia sempervirens</i>	Evergreen	64	42	30	No observable problems	
DHS-246	Valley Oak	<i>Quercus lobata</i>	Deciduous	5	2	1	No observable problems	
DHS-247	London Plane	<i>Platanus x acerifolia</i>	Deciduous	42	38	10	No observable problems	
DHS-248	Chinese Pistache	<i>Pistacia chinensis</i>	Deciduous	37	35	13	large surface roots	
DHS-249	Crape Myrtle	<i>Lagerstroemia indica</i>	Deciduous	20	13	4	No observable problems	
DHS-250	Crape Myrtle	<i>Lagerstroemia indica</i>	Deciduous	18	13	4	No observable problems	
DHS-251	Crape Myrtle	<i>Lagerstroemia indica</i>	Deciduous	20	13	4	No observable problems	
DHS-252	Crape Myrtle	<i>Lagerstroemia indica</i>	Deciduous	15	8	3	No observable problems	
DHS-253	Crape Myrtle	<i>Lagerstroemia indica</i>	Deciduous	22	17	3	No observable problems	Multi-trunk
DHS-254	Crape Myrtle	<i>Lagerstroemia indica</i>	Deciduous	20	17	2	No observable problems	Multi-trunk
DHS-255	Crape Myrtle	<i>Lagerstroemia indica</i>	Deciduous	20	13	2	No observable problems	Multi-trunk
DHS-256	Elm	<i>Ulmus</i>	Deciduous	15	11	2	No observable problems	
DHS-257	Redwood	<i>Sequoia sempervirens</i>	Evergreen	68	34	22	No observable problems	
DHS-258	Redwood	<i>Sequoia sempervirens</i>	Evergreen	46	21	11	No observable problems	Close to manhole
DHS-259	Redwood	<i>Sequoia sempervirens</i>	Evergreen	48	25	13	No observable problems	Close to manhole
DHS-260	Chinese Pistache	<i>Pistacia chinensis</i>	Deciduous	24	25	6	No observable problems	
DHS-261	Ornamental Pear	<i>Pyrus calleryana</i>	Deciduous	29	21	5	No observable problems	
DHS-262	Ornamental Pear	<i>Pyrus calleryana</i>	Deciduous	20	13	5	Surface roots	
DHS-263	Chinese Pistache	<i>Pistacia chinensis</i>	Deciduous	24	21	8	No observable problems	
DHS-264	Redwood	<i>Sequoia sempervirens</i>	Evergreen	66	29	22	No observable problems	
DHS-265	Redwood	<i>Sequoia sempervirens</i>	Evergreen	55	29	17	No observable problems	
DHS-266	Redwood	<i>Sequoia sempervirens</i>	Evergreen	55	29	17	No observable problems	
DHS-267	Redwood	<i>Sequoia sempervirens</i>	Evergreen	53	21	15	No observable problems	Transformer at base
DHS-268	Redwood	<i>Sequoia sempervirens</i>	Evergreen	48	21	16	No observable problems	
DHS-269	Trident Maple	<i>Acer buergerianum</i>	Deciduous	9	9	1	No observable problems	
DHS-270	Chinese Pistache	<i>Pistacia chinensis</i>	Deciduous	10	4	1	No observable problems	
DHS-271	Chinese Pistache	<i>Pistacia chinensis</i>	Deciduous	34	35	11	No observable problems	
DHS-272	London Plane	<i>Platanus x acerifolia</i>	Deciduous	29	26	9	Surface roots	
DHS-273	London Plane	<i>Platanus x acerifolia</i>	Deciduous	27	26	8	Surface roots	
DHS-274	London Plane	<i>Platanus x acerifolia</i>	Deciduous	40	44	15	No observable problems	
DHS-275	Chinese Tallow	<i>Sapium sebiferum</i>	Deciduous	34	31	15	Dead branches. lifting concrete	
DHS-276	Ornamental Pear	<i>Pyrus calleryana</i>	Deciduous	17	22	6	Damage to trunk and strong lean	
DHS-277	Ornamental Pear	<i>Pyrus calleryana</i>	Deciduous	21	15	6	Strong lean on trunk	

Data Collection - Davis Senior High School - Tree Data

DHS-278	Ornamental Pear	<i>Pyrus calleryana</i>	Deciduous	21	26	7	No observable problems	
DHS-279	Ornamental Pear	<i>Pyrus calleryana</i>	Deciduous	23	24	10	Lifting concrete	
DHS-280	Chinese Tallow	<i>Sapium sebiferum</i>	Deciduous	36	31	17	Lifting concrete, dead branches	
DHS-281	Ornamental Pear	<i>Pyrus calleryana</i>	Deciduous	11	11	5	Half dead	
DHS-282	Chinese Tallow	<i>Sapium sebiferum</i>	Deciduous	34	26	14	Lifting concrete	
DHS-283	Ornamental Pear	<i>Pyrus calleryana</i>	Deciduous	21	26	9	Dead branches	
DHS-284	Chinese Tallow	<i>Sapium sebiferum</i>	Deciduous	34	31	12	Lifting concrete, dead branches	
DHS-285	Ornamental Pear	<i>Pyrus calleryana</i>	Deciduous	19	15	6	Damage on the trunk	
DHS-286	Ornamental Pear	<i>Pyrus calleryana</i>	Deciduous	25	22	9	Dead branches	
DHS-287	Ornamental Pear	<i>Pyrus calleryana</i>	Deciduous	19	20	9	Large wound on trunk	
DHS-288	Redwood	<i>Sequoia sempervirens</i>	Evergreen	15	14	8	Stunted	
DHS-289	Italian cypress	<i>Cupressus sempervirens</i>	Evergreen	13	2	3	No observable problems	
DHS-290	Italian cypress	<i>Cupressus sempervirens</i>	Evergreen	13	2	3	No observable problems	
DHS-291	Italian cypress	<i>Cupressus sempervirens</i>	Evergreen	13	2	3	No observable problems	
DHS-292	Italian cypress	<i>Cupressus sempervirens</i>	Evergreen	13	2	3	No observable problems	
DHS-293	Italian cypress	<i>Cupressus sempervirens</i>	Evergreen	13	2	3	No observable problems	
DHS-294	Italian cypress	<i>Cupressus sempervirens</i>	Evergreen	13	2	3	No observable problems	
DHS-295	Italian cypress	<i>Cupressus sempervirens</i>	Evergreen	13	2	3	No observable problems	
DHS-296	Italian cypress	<i>Cupressus sempervirens</i>	Evergreen	13	2	3	No observable problems	
DHS-297	Italian cypress	<i>Cupressus sempervirens</i>	Evergreen	13	2	3	No observable problems	
DHS-298	Italian cypress	<i>Cupressus sempervirens</i>	Evergreen	13	2	3	No observable problems	
DHS-299	Italian cypress	<i>Cupressus sempervirens</i>	Evergreen	13	2	3	No observable problems	
DHS-300	Western Redbud	<i>Cercis canadensis</i> 'Oklahoma'	Deciduous	11	9	3	No observable problems	Memorial
DHS-301	Western Redbud	<i>Cercis canadensis</i> 'Oklahoma'	Deciduous	11	9	3	No observable problems	Memorial
DHS-302	Western Redbud	<i>Cercis canadensis</i> 'Oklahoma'	Deciduous	11	9	4	No observable problems	Memorial
DHS-303	Western Redbud	<i>Cercis canadensis</i> 'Oklahoma'	Deciduous	11	9	4	No observable problems	Memorial
DHS-304	Western Redbud	<i>Cercis canadensis</i> 'Oklahoma'	Deciduous	11	9	4	No observable problems	Memorial
DHS-305	Western Redbud	<i>Cercis canadensis</i> 'Oklahoma'	Deciduous	11	9	4	No observable problems	Memorial
DHS-306	Sawleaf Zelkova	<i>Zelkova serrata</i>	Deciduous	21	18	6	No observable problems	Memorial
DHS-307	Sawleaf Zelkova	<i>Zelkova serrata</i>	Deciduous	17	18	7	Significant damage to trunk due to sunburn	Memorial
DHS-308	Sawleaf Zelkova	<i>Zelkova serrata</i>	Deciduous	17	15	6	Significant damage the trunk due to sunburn, canopy dieback	Memorial
DHS-309	Sawleaf Zelkova	<i>Zelkova serrata</i>	Deciduous	19	18	6	Significant damage to trunk due to sunburn	Memorial
DHS-310	Sawleaf Zelkova	<i>Zelkova serrata</i>	Deciduous	13	13	5	Significant damage to trunk due to sunburn	Memorial
DHS-311	Sawleaf Zelkova	<i>Zelkova serrata</i>	Deciduous	21	15	6	No observable problems	Memorial
DHS-312	Chinese Tallow	<i>Sapium sebiferum</i>	Deciduous	25	39	22	Growing between fence and portable	Recommend for removal
DHS-313	Little leaf Linden	<i>Tilia cordata</i>	Deciduous	13	11	5	Significant damage the trunk due to sunburn, sucker cross a base tree leaning	Memorial
DHS-314	Little leaf Linden	<i>Tilia cordata</i>	Deciduous	19	13	6	trunk is splitting away, probably from hardwood on tree	Memorial, Recommend for removal
DHS-315	Little leaf Linden	<i>Tilia cordata</i>	Deciduous	19	13	6	truck peeling away from hardwood suckers rough at base	Memorial

DHS-316	Chinese Tallow	Sapium sebiferum	Deciduous	6	7	2	Sapling should be removed and replaced	Memorial
DHS-317	Little leaf linden	Tilia cordata	Deciduous	13	9	4	Half dead, remove	Memorial
DHS-318	Little leaf Linden	Tilia cordata	Deciduous	11	7	3	Dead, remove	Memorial
DHS-319	London Plane	Platanus x acerifolia	Deciduous	15	15	4	Dead branches	
DHS-320	London Plane	Platanus x acerifolia	Deciduous	21	20	5	Dead branches surface roots	
DHS-321	London Plane	Platanus x acerifolia	Deciduous	19	15	4	planted too low	
DHS-322	London Plane	Platanus x acerifolia	Deciduous	19	20	5	Dead branches	
DHS-323	London Plane	Platanus x acerifolia	Deciduous	17	13	4	Dead branches	
DHS-324	London Plane	Platanus x acerifolia	Deciduous	21	20	6	Dead branches	
DHS-325	Deador Cedar	Cedrus deodora	Evergreen	38	40	19	No observable problems	
DHS-326	Deador Cedar	Cedrus deodora	Evergreen	36	35	15	No observable problems	
DHS-327	Deador Cedar	Cedrus deodora	Evergreen	34	35	12	Lean on trunk	
DHS-328	Interior Live Oak	Quercus wislizenii	Evergreen	38	53	16	Dense canopy could be thinned out	
DHS-329	Sawleaf Zelkova	Zelkova serrata	Deciduous	21	26	7	No observable problems	
DHS-330	Sawleaf Zelkova	Zelkova serrata	Deciduous	23	35	8	Too close to light pole	
DHS-331	Sawleaf Zelkova	Zelkova serrata	Deciduous	17	15	4	No observable problems	
DHS-332	Sawleaf Zelkova	Zelkova serrata	Deciduous	21	26	6	No observable problems	
DHS-333	London Plane	Platanus x acerifolia	Deciduous	27	40	9	Crossing branches should be thinned out	
DHS-334	London Plane	Platanus x acerifolia	Deciduous	23	20	6	Dead branches	
DHS-335	London Plane	Platanus x acerifolia	Deciduous	17	15	4	No observable problems	
DHS-336	London Plane	Platanus x acerifolia	Deciduous	25	35	10	No observable problems	
DHS-337	London Plane	Platanus x acerifolia	Deciduous	25	31	10	No observable problems	
DHS-338	London Plane	Platanus x acerifolia	Deciduous	25	35	12	No observable problems	
DHS-339	London Plane	Platanus x acerifolia	Deciduous	21	26	7	No observable problems	
DHS-340	London Plane	Platanus x acerifolia	Deciduous	17	18	7	Dead branches	
DHS-341	London Plane	Platanus x acerifolia	Deciduous	17	18	6	Dead branches	
DHS-342	Purple leaf plum	Prunus cerasifera 'Atropurpurea'	Deciduous	23	28	8	No observable problems	
DHS-343	Purple leaf plum	Prunus cerasifera 'Atropurpurea'	Deciduous	17	22	6	No observable problems	
DHS-344	Purple leaf plum	Prunus cerasifera 'Atropurpurea'	Deciduous	17	20	12	No observable problems	
DHS-345	London Plane	Platanus x acerifolia	Deciduous	23	22	6	No observable problems	
DHS-346	London Plane	Platanus x acerifolia	Deciduous	32	31	9	No observable problems	
DHS-347	London Plane	Platanus x acerifolia	Deciduous	29	31	9	No observable problems	
DHS-348	London Plane	Platanus x acerifolia	Deciduous	38	40	11	No observable problems	
DHS-349	London Plane	Platanus x acerifolia	Deciduous	27	31	9	No observable problems	
DHS-350	London Plane	Platanus x acerifolia	Deciduous	25	26	8	No observable problems	
DHS-351	Ornamental Pear	Pyrus calleryana	Deciduous	29	35	14	No observable problems	
DHS-352	Purple leaf plum	Prunus cerasifera 'Atropurpurea'	Deciduous	15	18	7	No observable problems	
DHS-353	London Plane	Platanus x acerifolia	Deciduous	27	26	7	No observable problems	
DHS-354	London Plane	Platanus x acerifolia	Deciduous	27	31	8	No observable problems	
DHS-355	London Plane	Platanus x acerifolia	Deciduous	40	44	13	No observable problems	
DHS-356	London Plane	Platanus x acerifolia	Deciduous	25	26	7	No observable problems	

Data Collection - Davis Senior High School - Tree Data

DHS-357	London Plane	Platanus x acerifolia	Deciduous	27	26	8	No observable problems	
DHS-358	London Plane	Platanus x acerifolia	Deciduous	17	20	5	No observable problems	
DHS-359	London Plane	Platanus x acerifolia	Deciduous	19	26	6	No observable problems	
DHS-360	London Plane	Platanus x acerifolia	Deciduous	25	24	6	No observable problems	
DHS-361	London Plane	Platanus x acerifolia	Deciduous	19	22	6	No observable problems	
DHS-362	London Plane	Platanus x acerifolia	Deciduous	21	26	6	No observable problems	
DHS-363	London Plane	Platanus x acerifolia	Deciduous	21	22	6	No observable problems	
DHS-364	London Plane	Platanus x acerifolia	Deciduous	27	20	7	No observable problems	
DHS-365	Fruitless Mulberry	Morus alba 'fruitless'	Deciduous	48	48	28	No observable problems	Too close to building
DHS-366	Fruitless Mulberry	Morus alba 'fruitless'	Deciduous	48	48	26	No observable problems	Too close to building
DHS-367	London Plane	Platanus x acerifolia	Deciduous	34	35	13	No observable problems	
DHS-368	Apricot	Prunus armeniaca	Deciduous	29	31	22	Growing in fence lopsided to South, dead branches	
DHS-369	Cork oak	Quercus suber	Evergreen	40	31	19	No observable problems	
DHS-370	Crape Myrtle	Lagerstroemia indica	Deciduous	15	18	4	No observable problems	Multi-trunk
DHS-371	Honey Locust	Gleditsia triacanthos	Deciduous	34	44	14	Dead branches	
DHS-372	Cork Oak	Quercus suber	Evergreen	29	44	21	No observable problems	
DHS-373	Honey Locust	Gleditsia triacanthos	Deciduous	40	48	19	No observable problems	
DHS-374	Honey Locust	Gleditsia triacanthos	Deciduous	38	40	15	No observable problems	Too close to a light pole
DHS-375	Modesto Ash	Fraxinus velutina 'Modesto'	Deciduous	32	40	12	Tree leaning to the east half dead	
DHS-376	Honey Locust	Gleditsia triacanthos	Deciduous	32	40	15	dead branches	
DHS-377	Honey Locust	Gleditsia triacanthos	Deciduous	40	40	17	Dead branches	
DHS-378	Honey Locust	Gleditsia triacanthos	Deciduous	32	48	14	Dead branches	
DHS-379	Modesto Ash	Fraxinus velutina 'Modesto'	Deciduous	34	29	11	Half dead	
DHS-380	Honey Locust	Gleditsia triacanthos	Deciduous	48	55	23	No observable problems	Too closest city sidewalk
DHS-381	Honey Locust	Gleditsia triacanthos	Deciduous	51	62	19	Dead branches	
DHS-382	Beefwood	Casuarina cunninghamiana	Evergreen	84	42	32	significant damage and basic trunk	
DHS-383	Beefwood	Casuarina cunninghamiana	Evergreen	79	34	25	Sucker growth base	
DHS-384	Beefwood	Casuarina cunninghamiana	Evergreen	84	29	28	No observable problems	
DHS-385	Beefwood	Casuarina cunninghamiana	Evergreen	68	67	32	Broken branches	
DHS-386	Beefwood	Casuarina cunninghamiana	Evergreen	86	45	25	No observable problems	
DHS-387	Valley Oak	Quercus lobata	Deciduous	90	84	54	No observable problems	
DHS-388	Italian cypress	Cupressus sempervirens	Evergreen	33	4	3	No observable problems	
DHS-389	London Plane	Platanus x acerifolia	Deciduous	35	25	9	No observable problems	
DHS-390	London Plane	Platanus x acerifolia	Deciduous	15	8	3	Dead leader should be removed	
DHS-391	London Plane	Platanus x acerifolia	Deciduous	22	13	4	Too close to adjacent tree	Recommend for removal
DHS-392	London Plane	Platanus x acerifolia	Deciduous	29	13	6	Surface roots	
DHS-393	Ornamental Pear	Pyrus calleryana	Deciduous	33	17	12	No observable problems	
DHS-394	London Plane	Platanus x acerifolia	Deciduous	29	21	6	No observable problems	
DHS-395	London Plane	Platanus x acerifolia	Deciduous	29	17	6	No observable problems	
DHS-396	London Plane	Platanus x acerifolia	Deciduous	31	19	7	Too close to adjacent tree	Recommend for removal
DHS-397	London Plane	Platanus x acerifolia	Deciduous	35	21	7	Surface roots	

DHS-398	London Plane	Platanus x acerifolia	Deciduous	27	17	6	Surface roots
DHS-399	Sawleaf Zelkova	Zelkova serrata	Deciduous	24	21	5	Damage to bark
DHS-400	Sawleaf Zelkova	Zelkova serrata	Deciduous	24	21	6	No observable problems
DHS-401	Sawleaf Zelkova	Zelkova serrata	Deciduous	20	8	4	Damage at base of tree
DHS-402	London Plane	Platanus x acerifolia	Deciduous	31	25	8	No observable problems
DHS-403	London Plane	Platanus x acerifolia	Deciduous	37	34	10	No observable problems
DHS-404	Chinese Pistache	Pistacia chinensis	Deciduous	20	11	4	Damage at base
DHS-405	Chinese Pistache	Pistacia chinensis	Deciduous	20	17	4	Damage at base
DHS-406	Chinese Pistache	Pistacia chinensis	Deciduous	22	17	5	No observable problems
DHS-407	Elm	Ulmus	Deciduous	46	42	12	Sucker growth at base
DHS-408	Chinese Pistache	Pistacia chinensis	Deciduous	20	13	4	Damage at base
DHS-409	Chinese Pistache	Pistacia chinensis	Deciduous	24	25	5	No observable problems
DHS-410	Burr Oak	Quercus macrocarpa	Deciduous	62	42	13	No observable problems
DHS-411	Chinese Pistache	Pistacia chinensis	Deciduous	40	42	7	No observable problems
DHS-412	Burr Oak	Quercus macrocarpa	Deciduous	62	67	16	Dead branches
DHS-413	Burr Oak	Quercus macrocarpa	Deciduous	66	76	21	Dead branches
DHS-414	Burr Oak	Quercus macrocarpa	Deciduous	59	67	22	Dead. Ranches
DHS-415	Chinquapin Oak	Quercus muehlenbergii	Deciduous	62	55	16	Dead branches
DHS-416	Burr Oak	Quercus macrocarpa	Deciduous	51	48	12	No observable problems
DHS-417	Chinese Hackberry	Celtis sinensis	Deciduous	46	38	9	Privet growing at base
DHS-418	Holly Oak	Quercus ilex	Evergreen	35	38	12	Crowded from adjacent tree
DHS-419	Elm	Ulmus	Deciduous	40	42	12	No observable problems
DHS-420	Chinquapin Oak	Quercus muehlenbergii	Deciduous	48	42	14	No observable problems
DHS-421	Chinquapin Oak	Quercus muehlenbergii	Deciduous	42	29	8	No observable problems
DHS-422	London Plane	Platanus x acerifolia	Deciduous	29	29	8	Poor branching, dieback at tips
DHS-423	Valley Oak	Quercus lobata	Deciduous	51	46	17	Dead branches
DHS-424	Valley Oak	Quercus lobata	Deciduous	35	29	11	Dead branches
DHS-425	Valley Oak	Quercus lobata	Deciduous	46	42	18	Dead branches
DHS-426	Coast live oak	Quercus agrifolia	Evergreen	42	38	18	Dead branches
DHS-427	Chinese Hackberry	Celtis sinensis	Deciduous	29	34	10	No observable problems